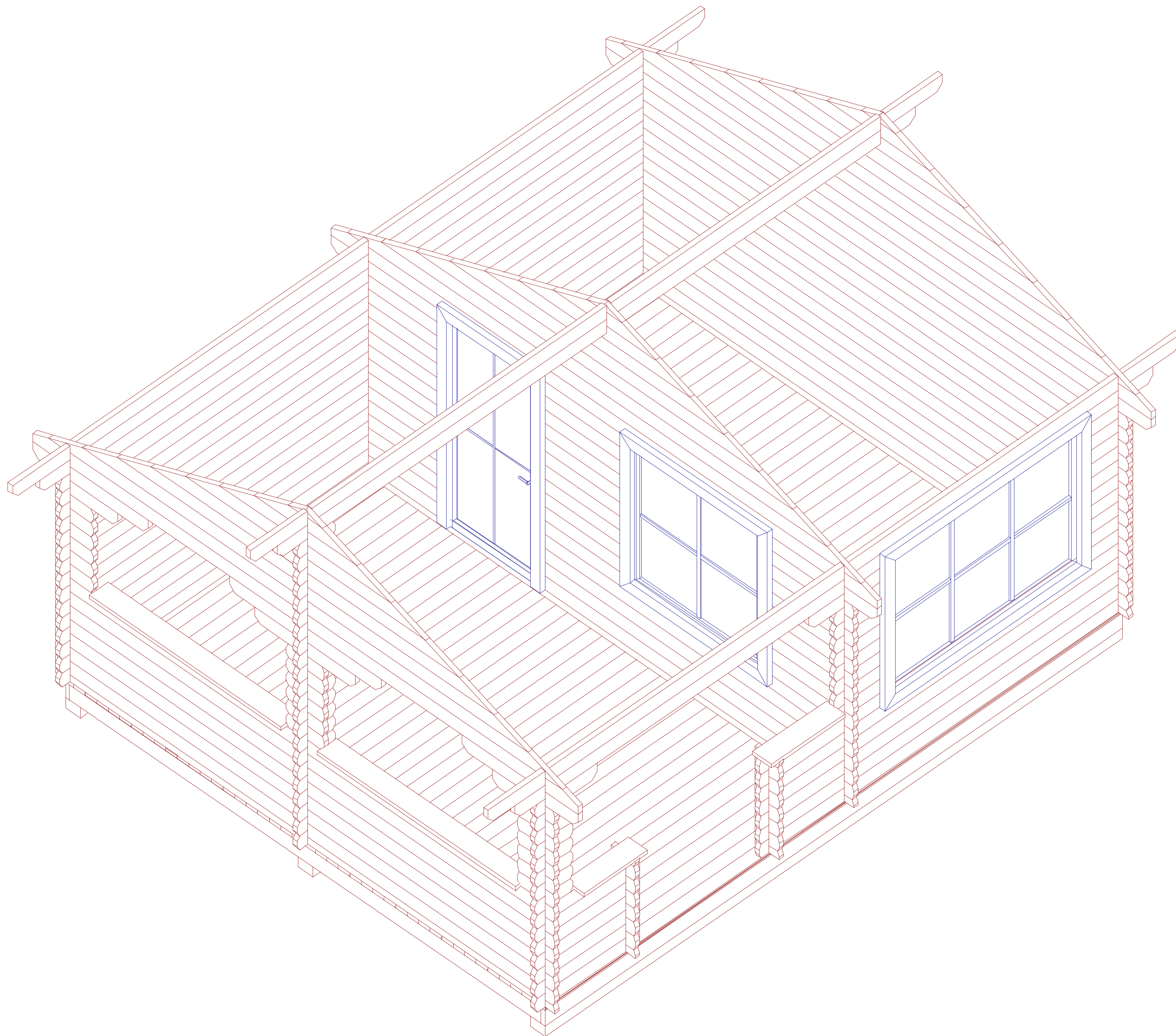
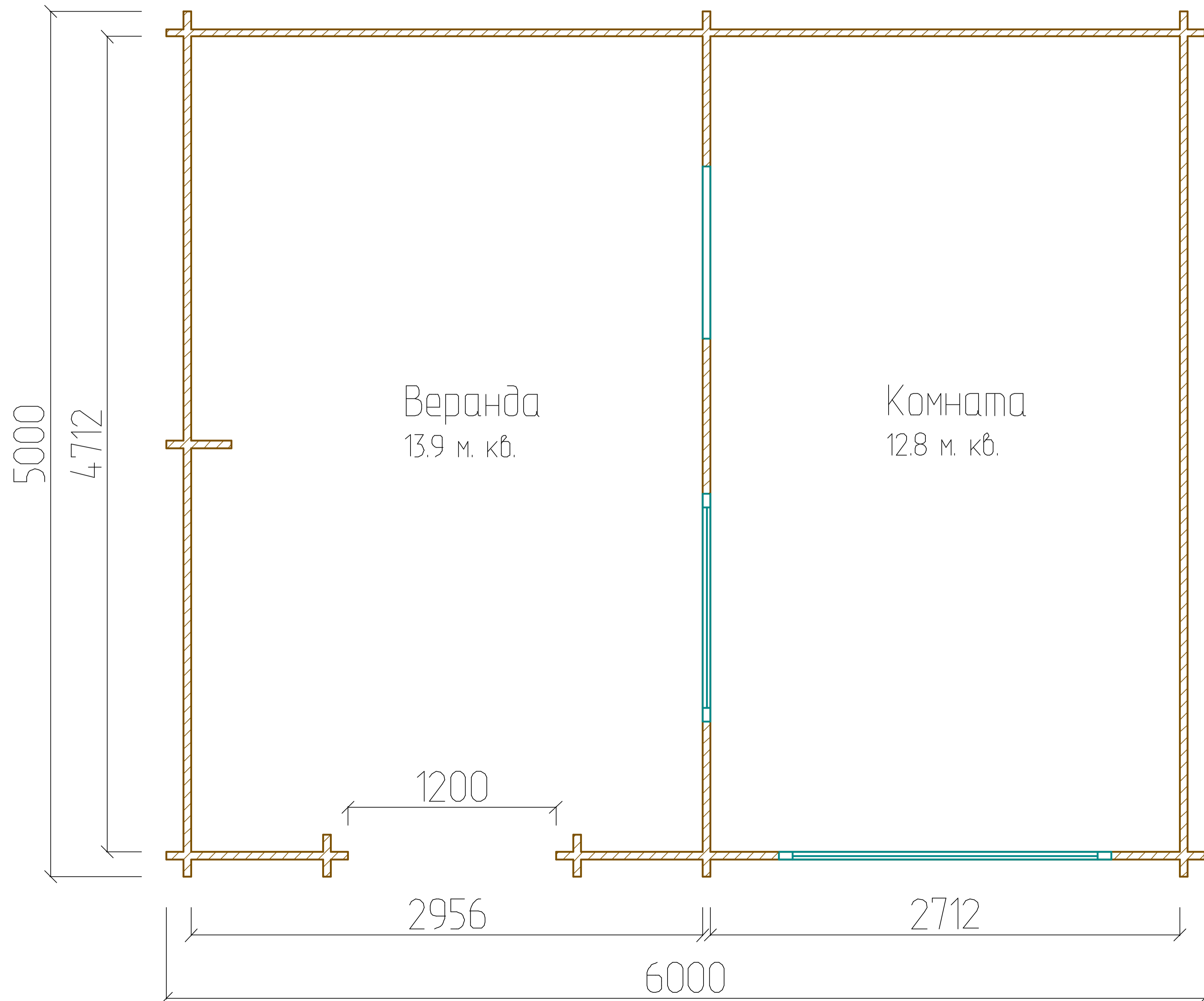


Дом "Сокол" 5.0x6.0 (4.8x5.8)

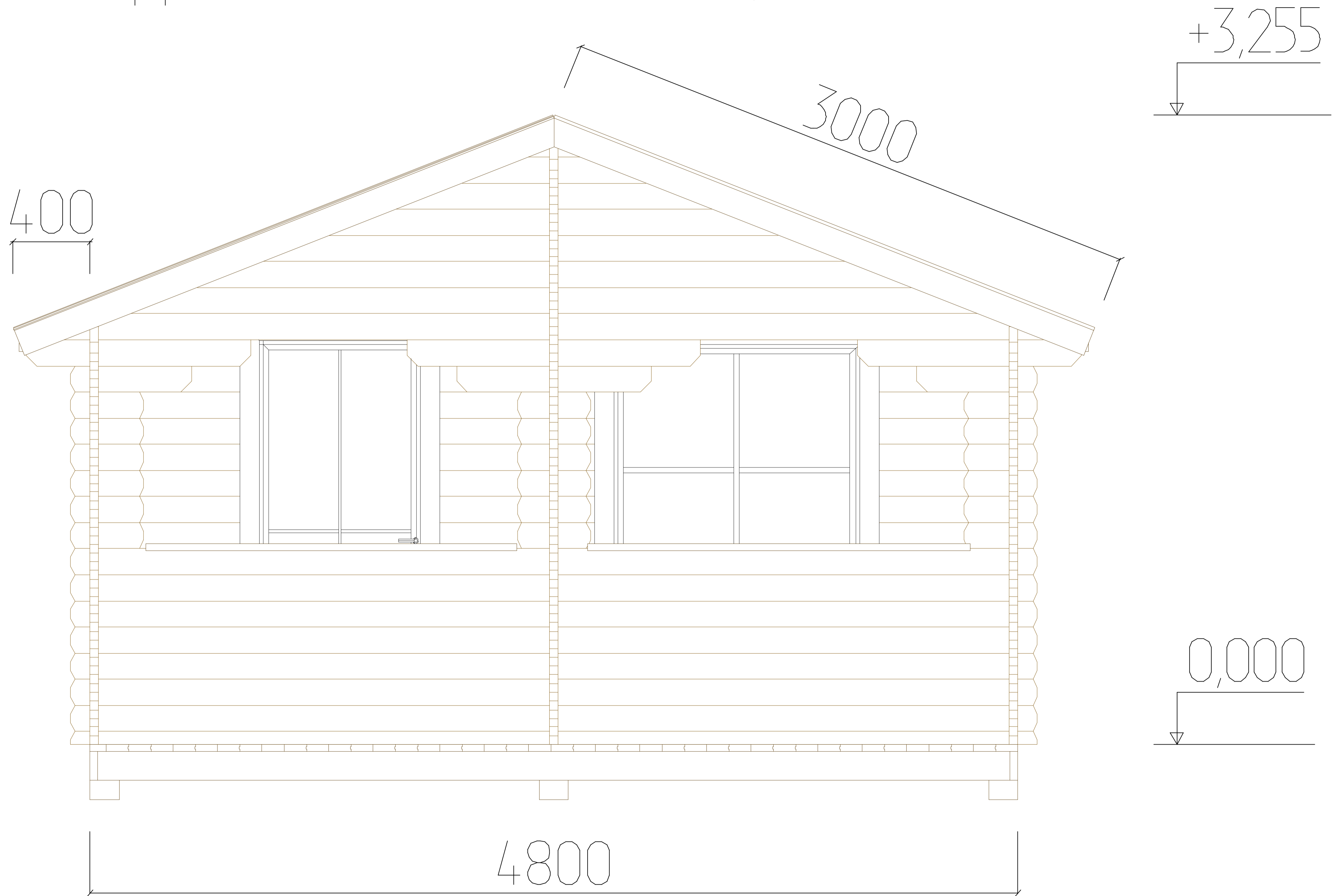


План дома "Сокол" 5.0x6.0 (4.8x5.8)

Общая площадь: 26.7 м. кв.



Дом "Сокол" 5.0x6.0 (4.8x5.8)



Дом "Сокол" 5.0x6.0 (4.8x5.8)

7000

