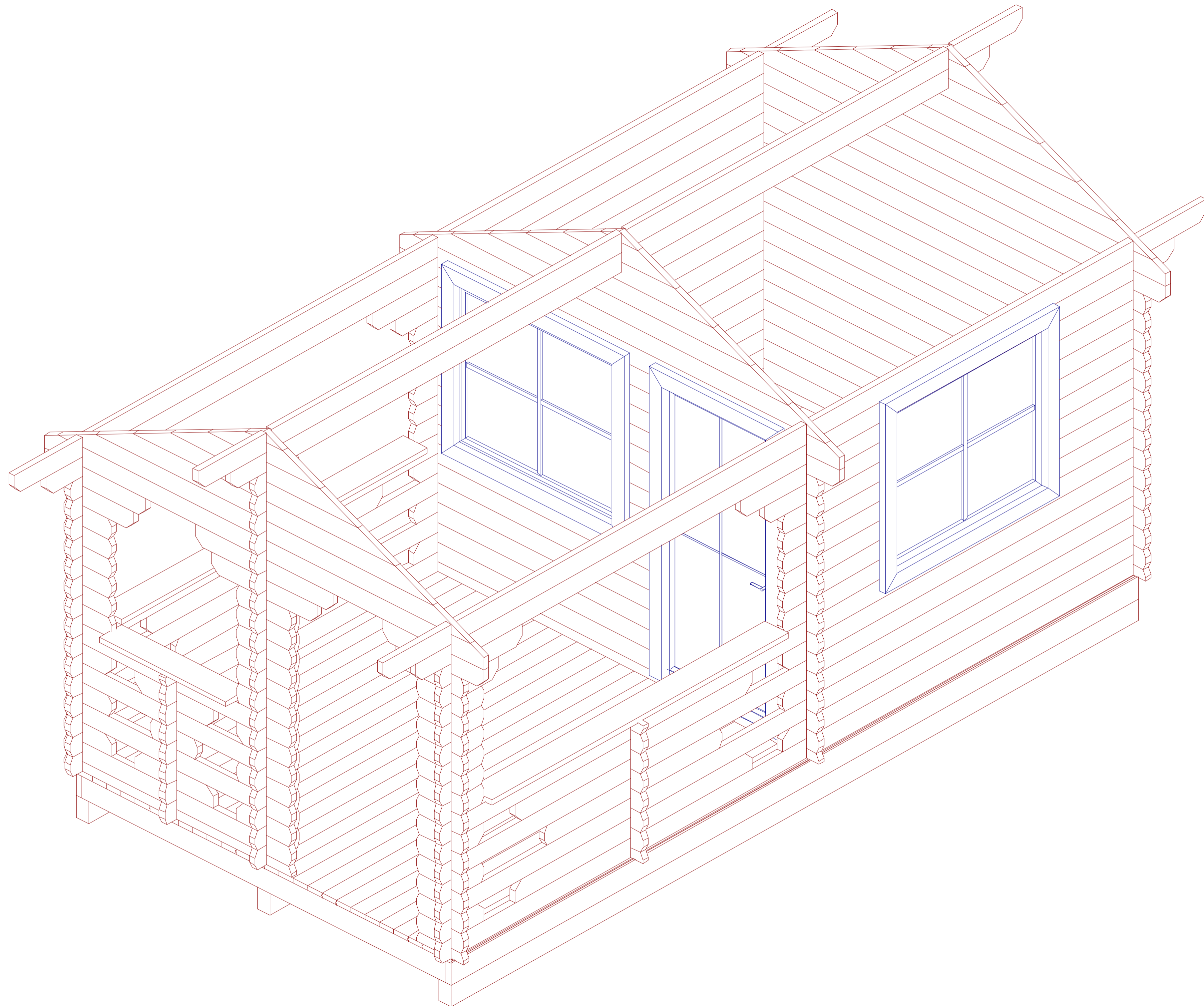
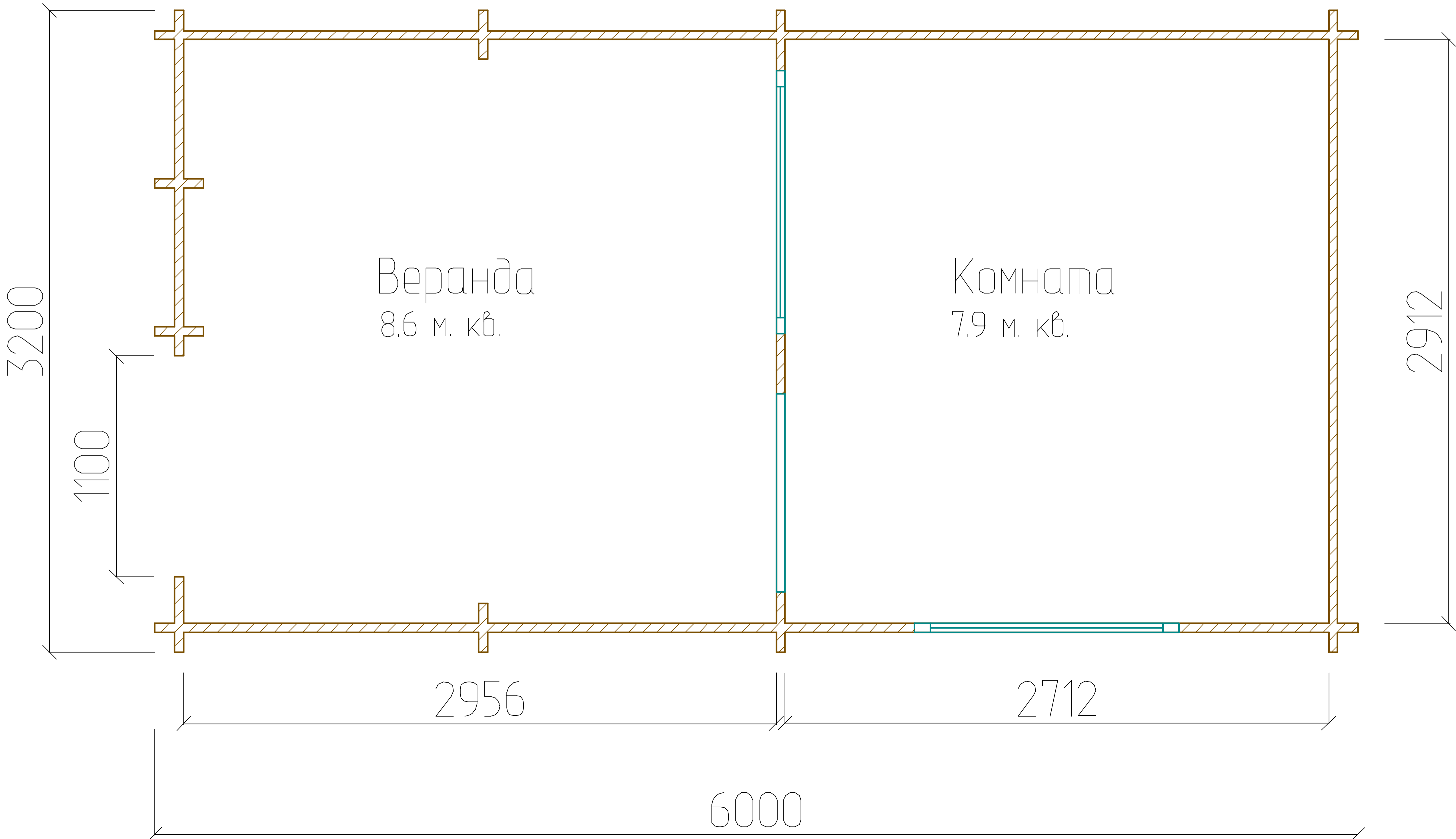


Дом "Сокол" 3.2x6.0 (3.0x5.8)



План дома "Сокол" 3.2х6.0 (3.0х5.8)

Общая площадь: 16.5 м. кв.



Дом "Сокол" 3.2x6.0 (3.0x5.8)

+2,985

330

2000



0,000

3000

www.besedki-msk.ru

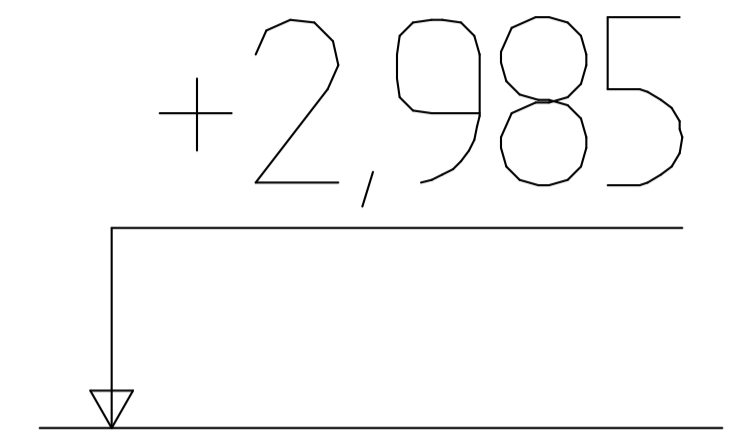
Дом "Сокол" 3.2x6.0 (3.0x5.8)

7000

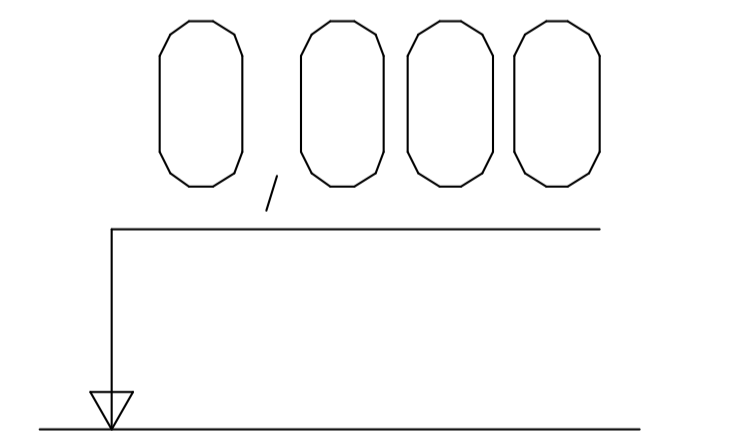
600

600

+2,985



0,000



5800